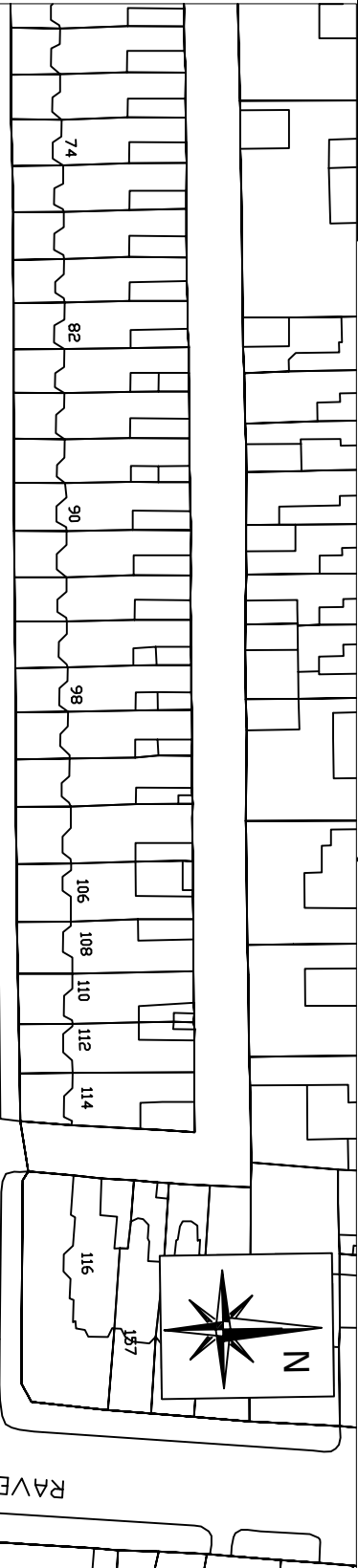
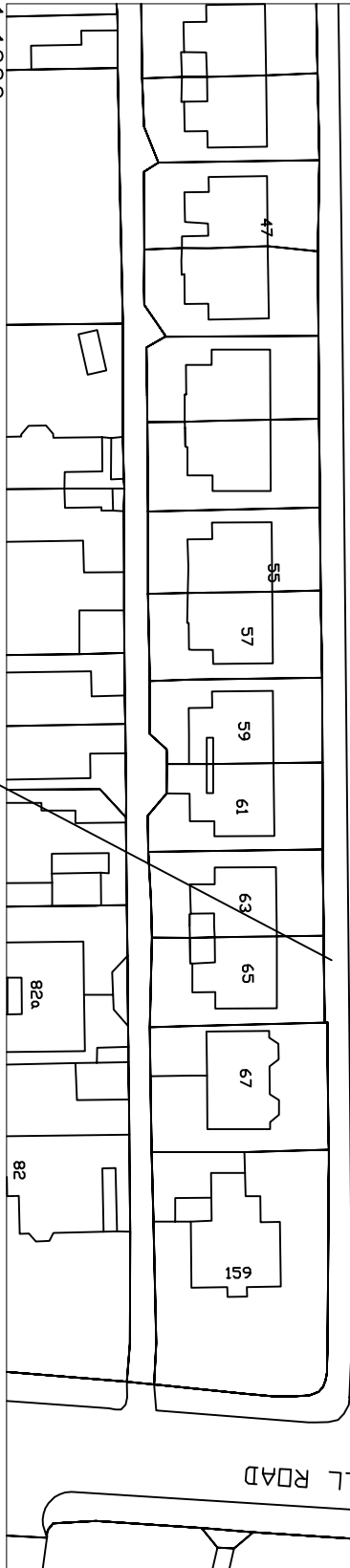


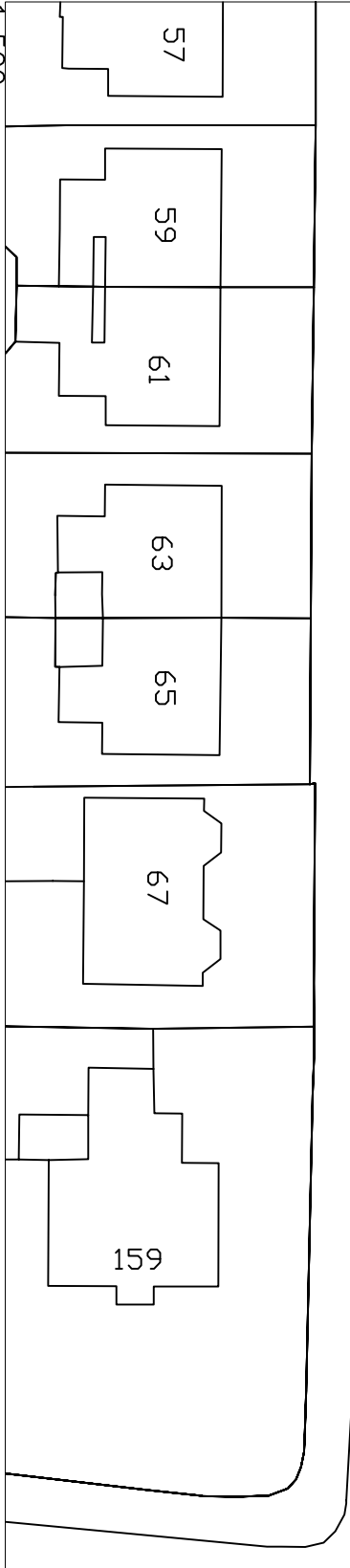
North Parade, Belfast (south side) – from a point 51 metres west of its junction with Ravenhill Road, for a distance of 6 metres in westerly direction.



NORTH PARADE 51 metres



NORTH PARADE 6.00 m
DISABLED



1:500

No.	REVISION	DATE

Based upon the Ordnance Survey of Northern Ireland 1:1000 Scale Map with the Permission of the Director and Chief Executive
 © Crown Copyright
 Unauthorised reproduction infringes Crown Copyright and may lead to prosecution or civil proceedings

Project 65 NORTH PARADE BELFAST

Title PROPOSED ACCESSIBLE / DISABLED PARKING BAY

FILE NO.	DESIGNED	AO'H	date
			SEPT'24
DRAWN	CHECKED		date
TRACED	APPROVED		date

Dwg. No. TM2/BEL/SEPT/24/45/A
 Scales AS SHOWN

Eastern Division
 Annex 7
 Castle Buildings
 Stormont Estate
 Belfast
 BT4 3SQ
 Telephone: 0300 200 7893
 Textphone: 028 90540022

