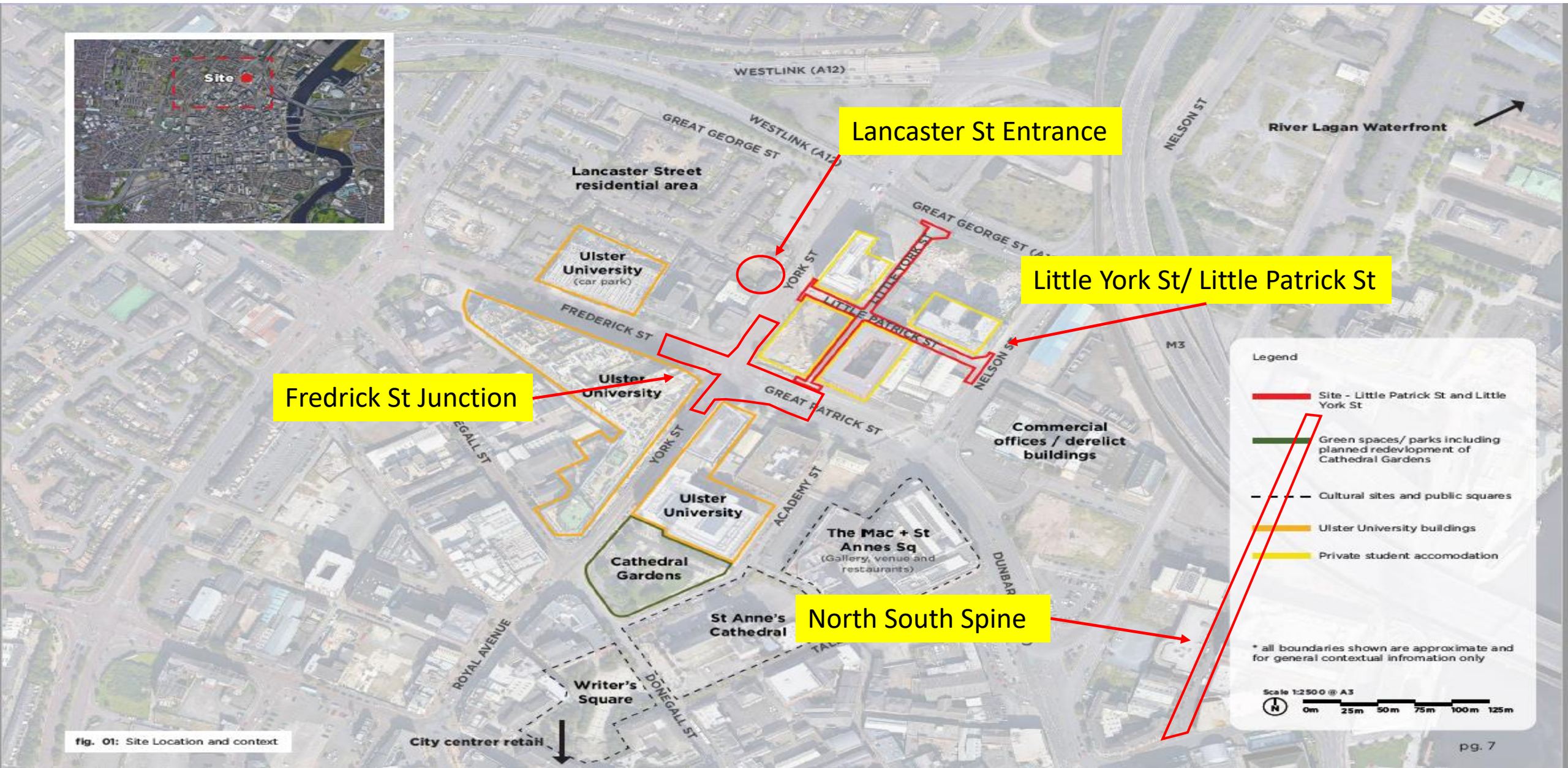


Little York Street – Little Patrick Street

Emerging Concept Design



Legend

- Site - Little Patrick St and Little York St
- Green spaces/ parks including planned redevelopment of Cathedral Gardens
- Cultural sites and public squares
- Ulster University buildings
- Private student accomodation

* all boundaries shown are approximate and for general contextual information only

Scale 1:2500 @ A3

0m 25m 50m 75m 100m 125m

fig. 01: Site Location and context

Concept Design

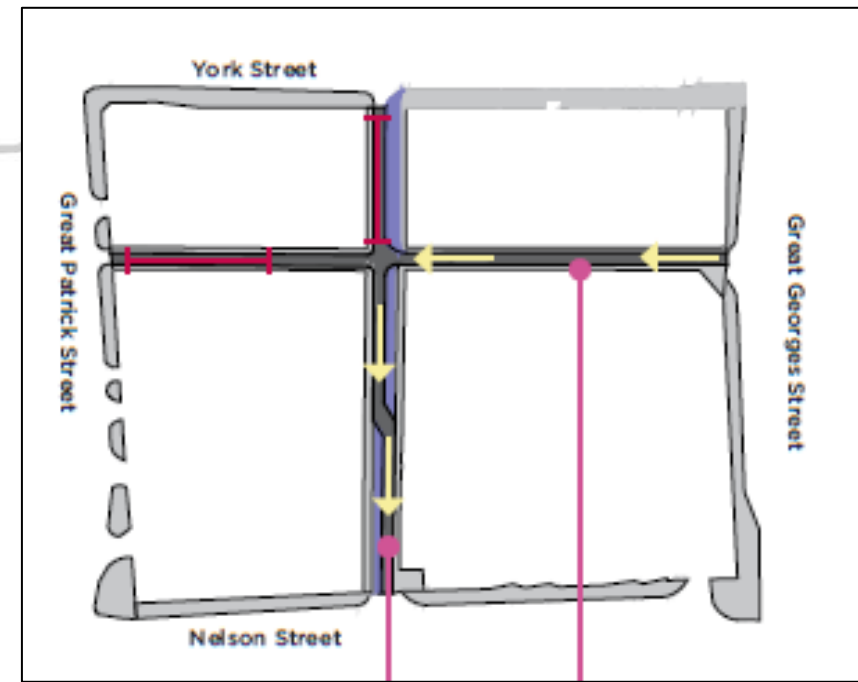
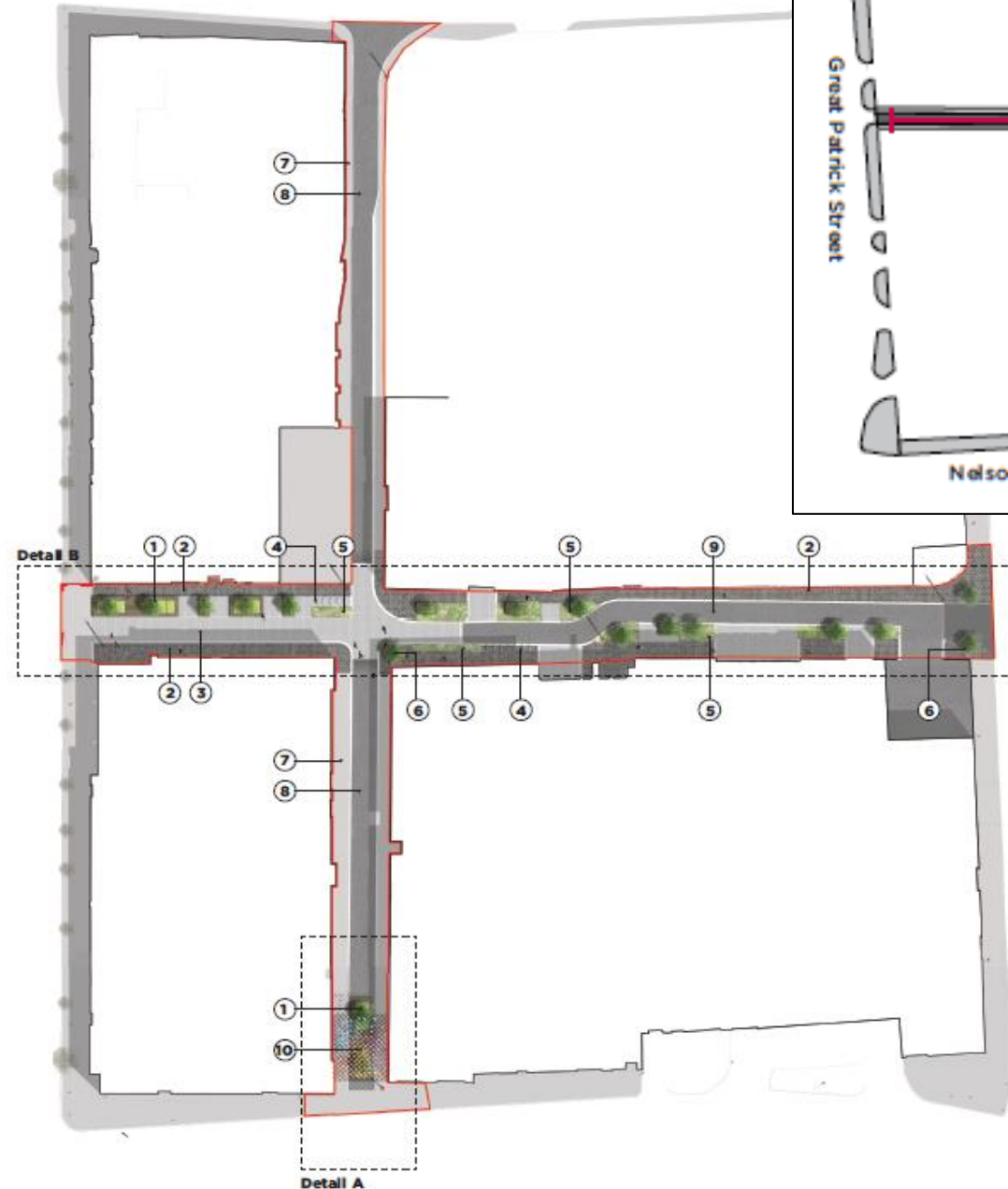
3.1 Illustrative Plan

Overview

The concept design focuses on Little Patrick Street as the main area of intervention by reducing the carriageway to a single lane along its length and creating space for planters with integrated seating, cycle parking, tree planting and rain gardens along its length.

Caithness slabs will be used for pedestrian footways along the length of Little Patrick Street with granite setts in areas which are to be stopped up / prioritised for pedestrians. Flush kerbs will also be used in these areas to create a continuous level surface, prioritising pedestrians whilst still enabling cycle access.

1. Planters with integrated seating
2. Caithness pavers
3. Granite setts
4. Cycle parking
5. Rain gardens with tree planting
6. Street tree planting
7. Existing asphalt footpath
8. Existing asphalt carriageway
9. Resurfaced asphalt carriageway
10. Catenary lighting to Great Patrick Street/ Little York Street entrance
11. Bespoke lighting pillars (only shown in details A and B)



Artist Impression

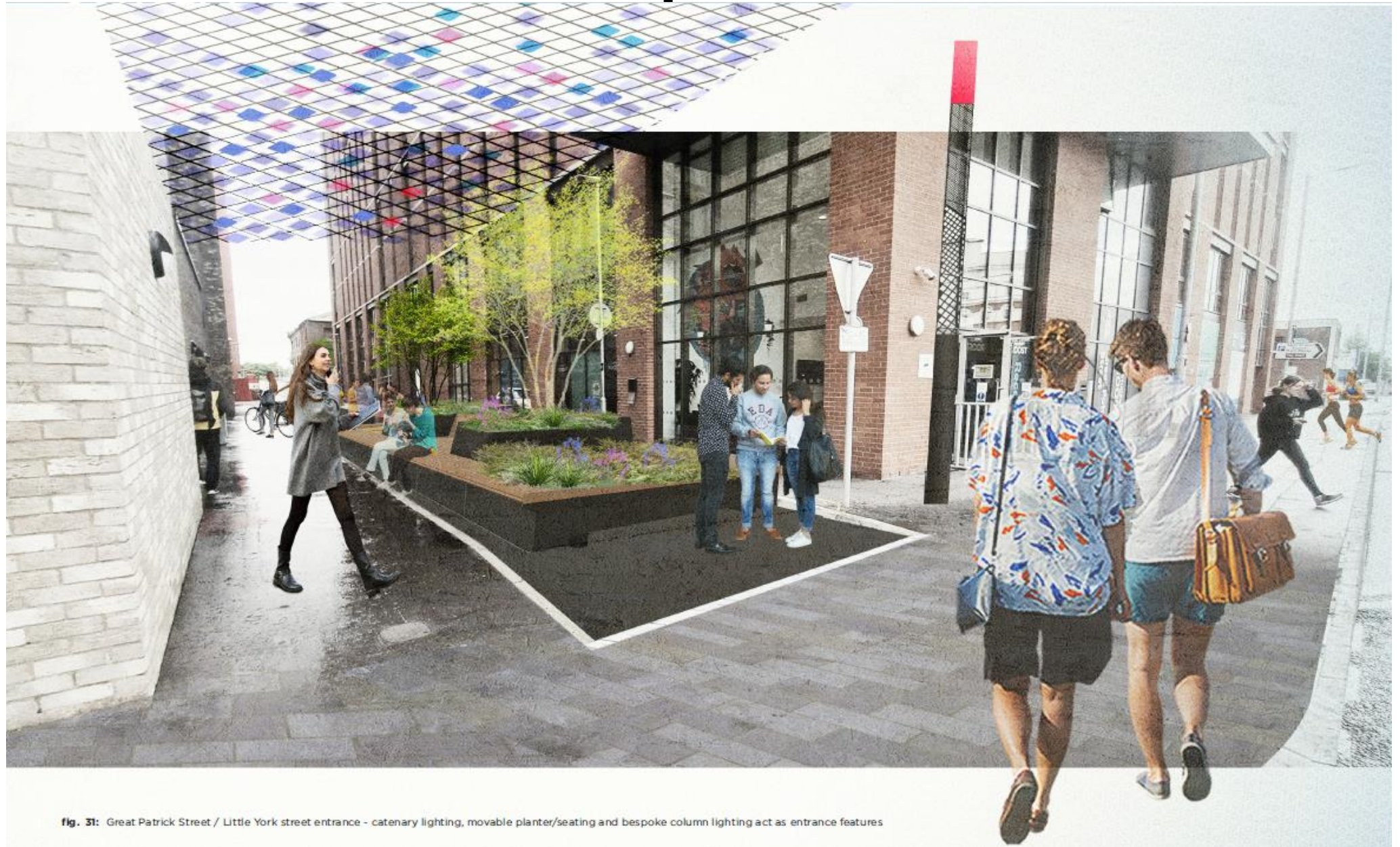


fig. 31: Great Patrick Street / Little York street entrance - catenary lighting, movable planter/seating and bespoke column lighting act as entrance features

Continued

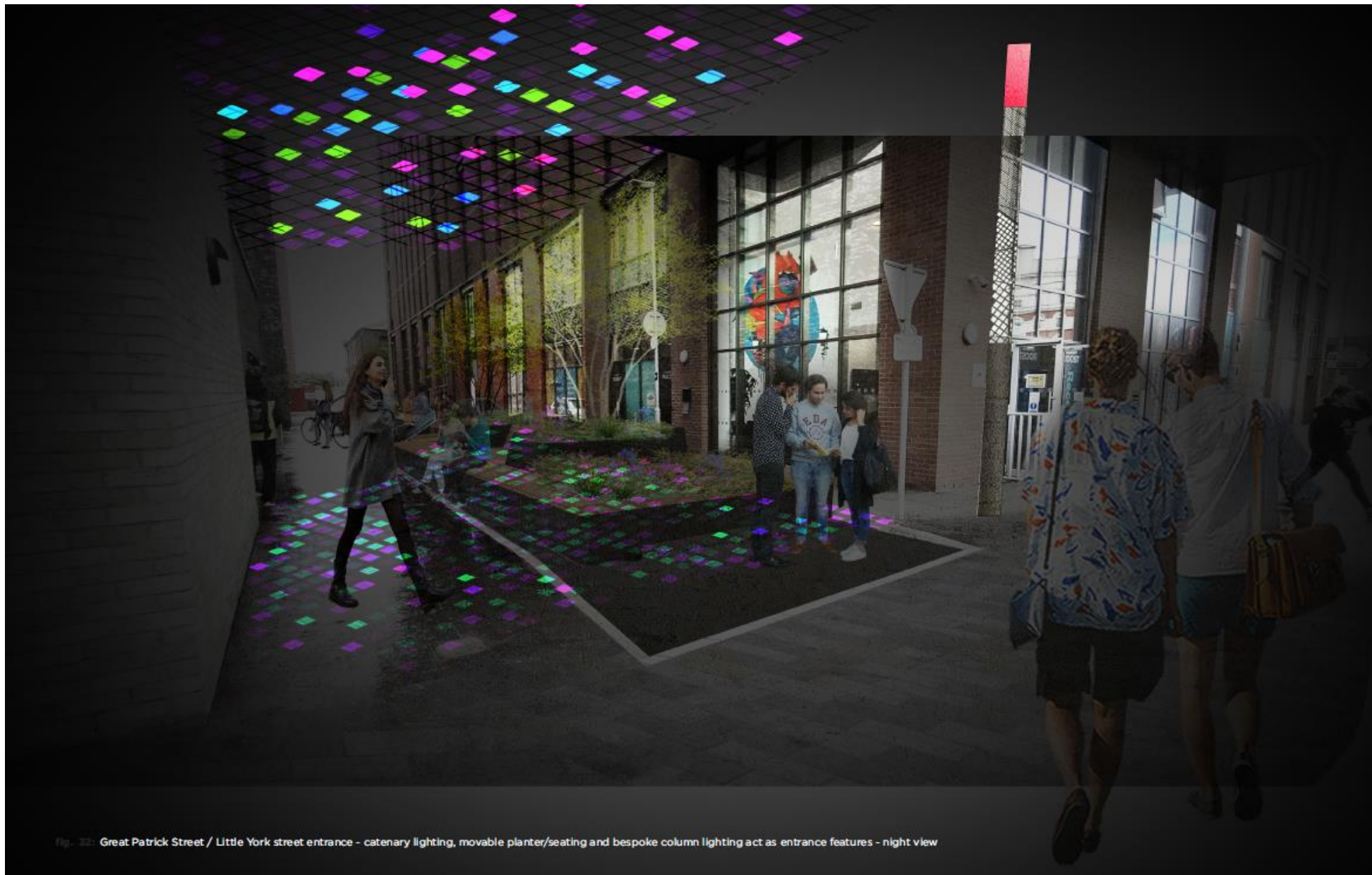


Fig. 33: Great Patrick Street / Little York street entrance - catenary lighting, movable planter/seating and bespoke column lighting act as entrance features - night view