

Appendix 1 – Kerbside Glass Expansion Phase 1 2024/25

Figure 1: Map of households with kerbside glass collection scheme

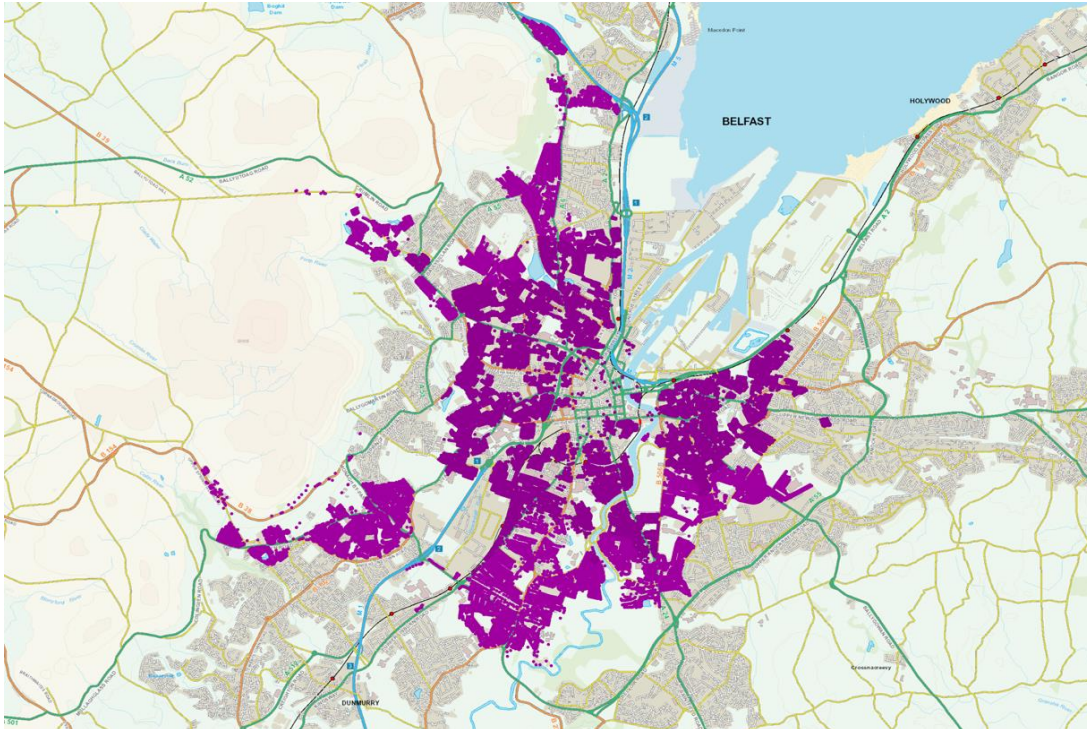


Figure 2: Map of households **without** kerbside glass collection scheme

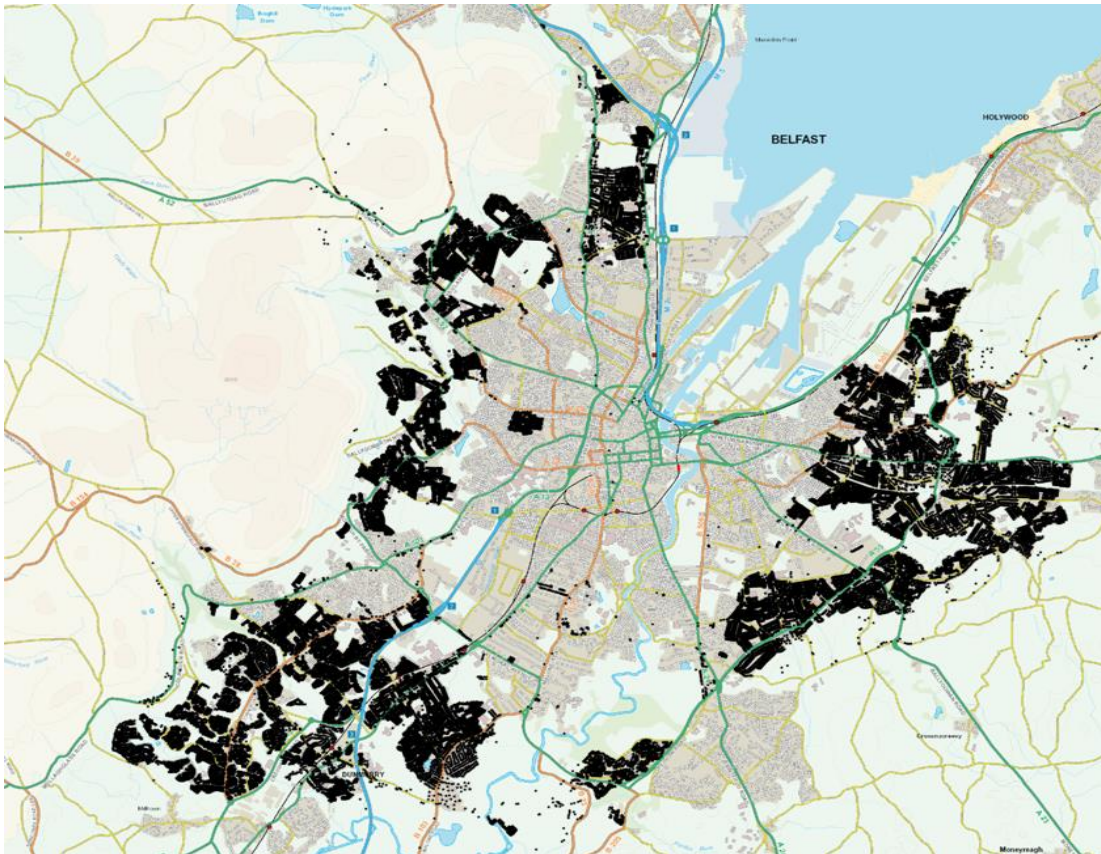


Figure 3 : Map of proposed phase 1 expansion 2024/25

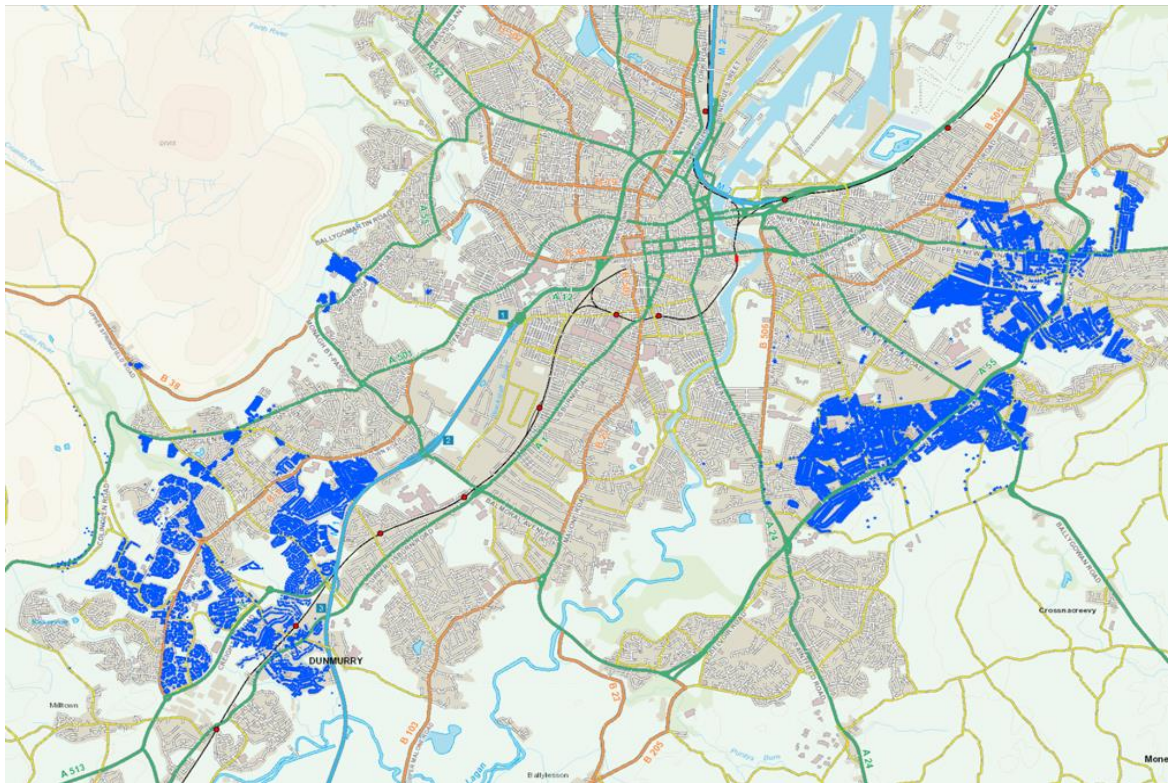


Figure 4: Existing kerbside glass collection provision plus proposed Phase 1

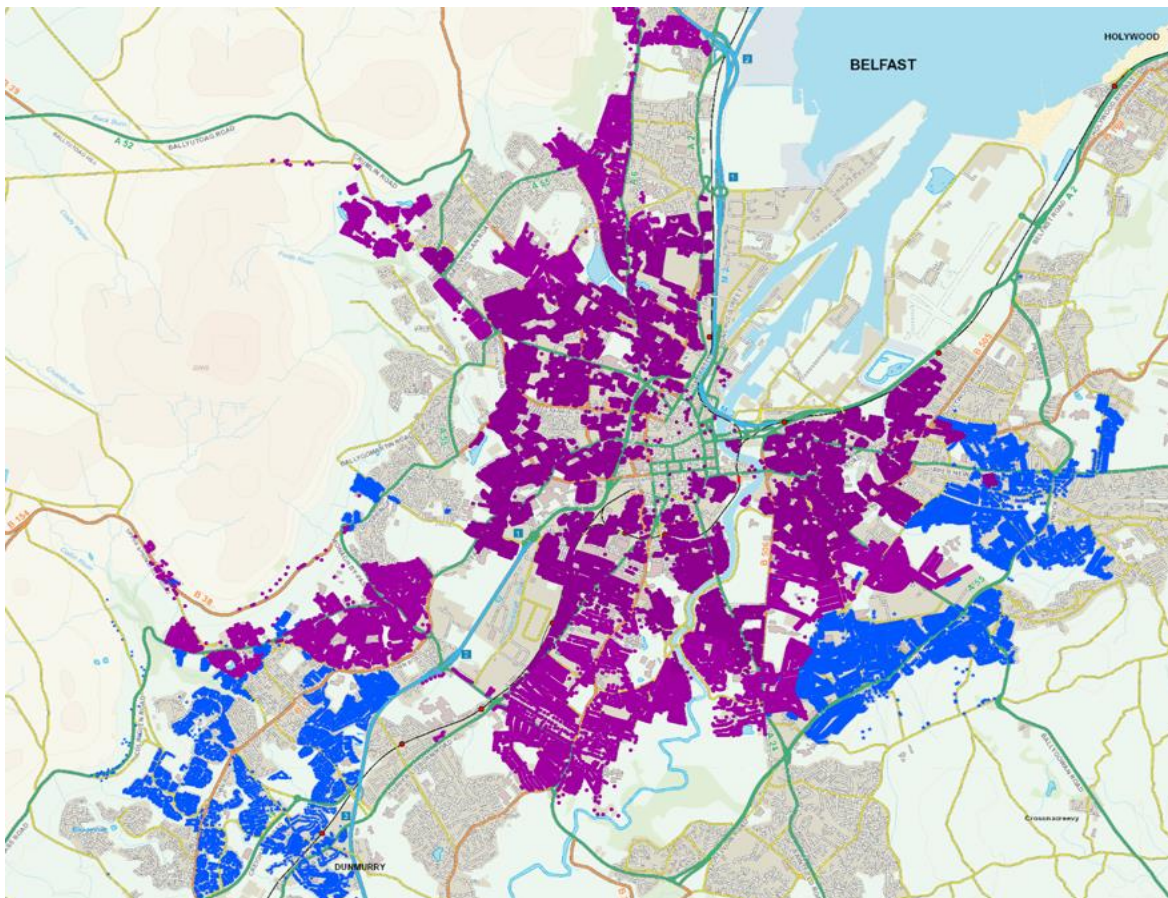


Table1: Proposed phase 1 expansion by District Electoral Area

Row Labels	Count of UPRN
Black Mountain	1868
Collin	9309
Lisnasharragh	6462
Ormiston	5187
(blank)	
Grand Total	22826
East Total	11649
West Total	11177
Grand Total	22826

NB: Please note these figures may vary as more detailed planning is carried out.