

# Cave Hill Mountain Biking Trail Pilot

Chris Scott



'A more active and healthy society appreciating the outdoors.'





# Today



- MTB Trails on Cave Hill
- Brief - Key Elements
- Approach
- Next Steps
- Q&A



# Belfast Castle and Cave Hill Country Park

OUTDOOR  
RECREATION  
NORTHERN IRELAND

## Map key

- Cave Hill trail
- Estate trail
- Castle trail
- Path
- Adventurous Playground
- Car Park
- Entrance into park







# OUTDOOR RECREATION NORTHERN IRELAND

## Cave Hill Mountain Bike Trails

Scale: 1:8,000

### Key

#### Trails

##### MTB Trails

- Middle
- Forest Path Shortcut
- Quarry
- Devil's Punchbowl
- Gaga
- Hungry Heart
- Swayze Train
- Forest Path
- Mad Again
- Middle Trail Hiking Shortcut
- Lights Out
- Quarry Hike Trail
- Rush

##### Cave Hill Country Park Trails

- Castle Trail
- Cavehill Trail
- Estate Trail

#### Heritage Designations

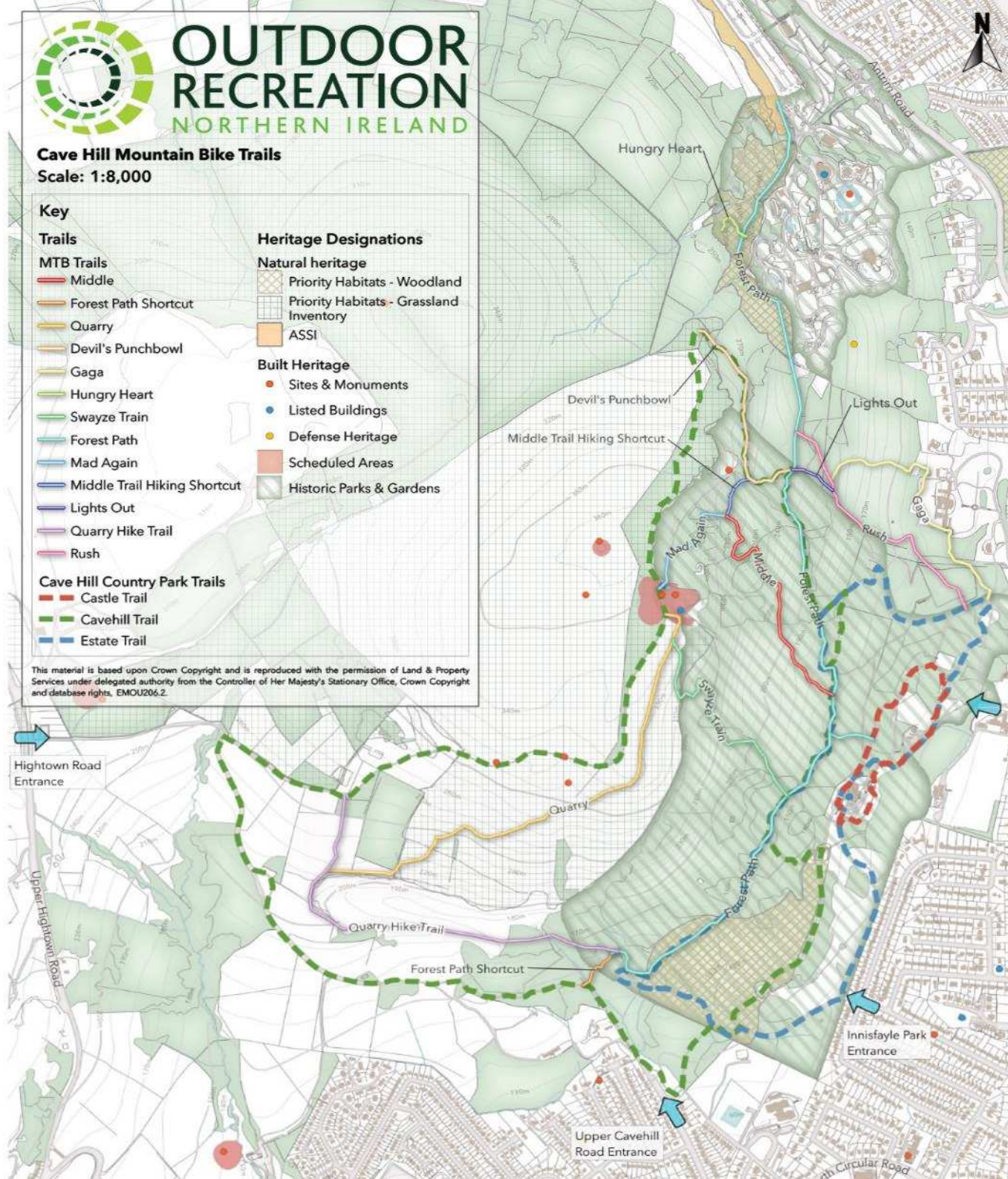
##### Natural heritage

- Priority Habitats - Woodland
- Priority Habitats - Grassland Inventory
- ASSI

##### Built Heritage

- Sites & Monuments
- Listed Buildings
- Defense Heritage
- Scheduled Areas
- Historic Parks & Gardens

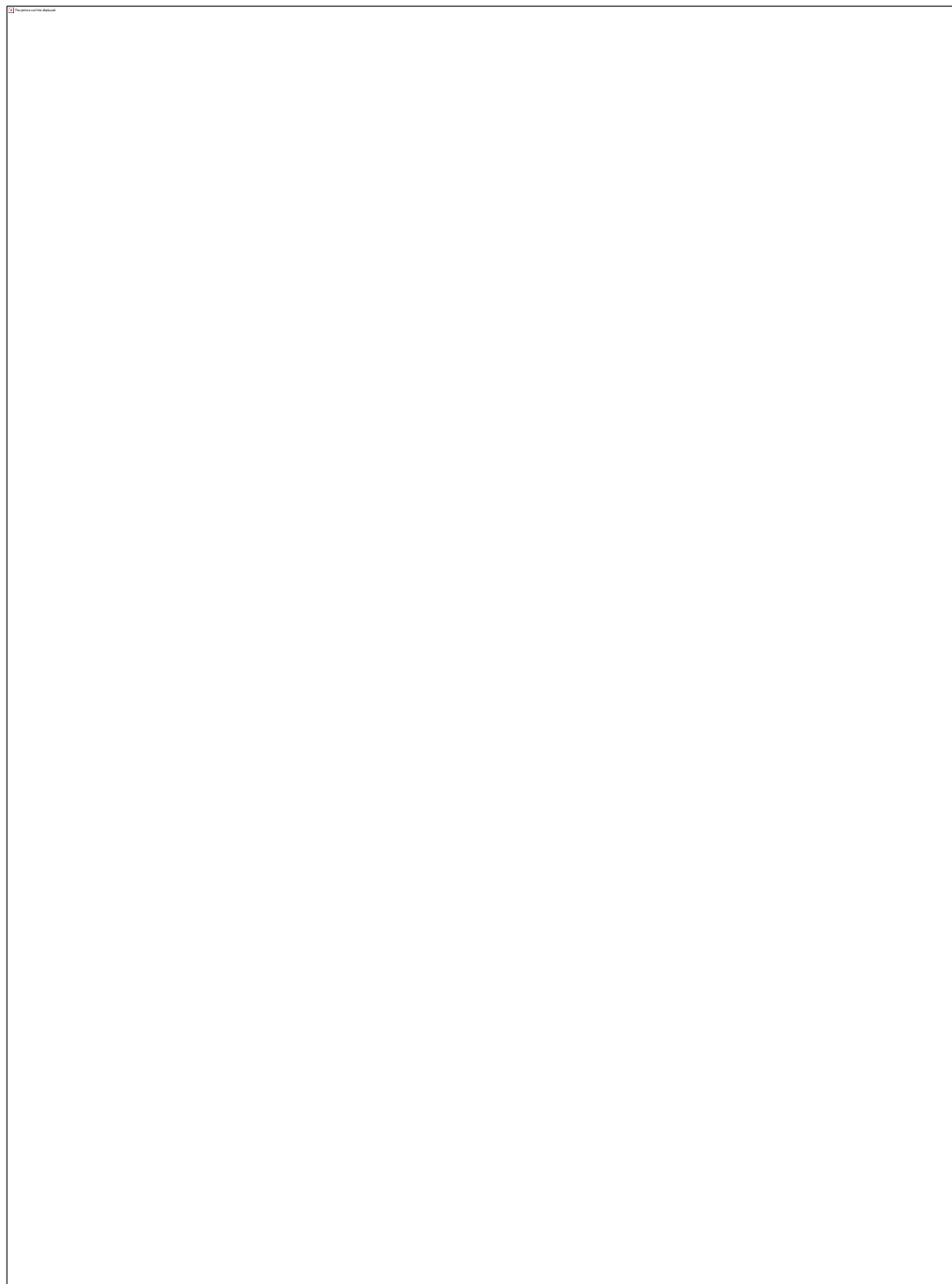
This material is based upon Crown Copyright and is reproduced with the permission of Land & Property Services under delegated authority from the Controller of Her Majesty's Stationary Office, Crown Copyright and database rights, EMOU2062.





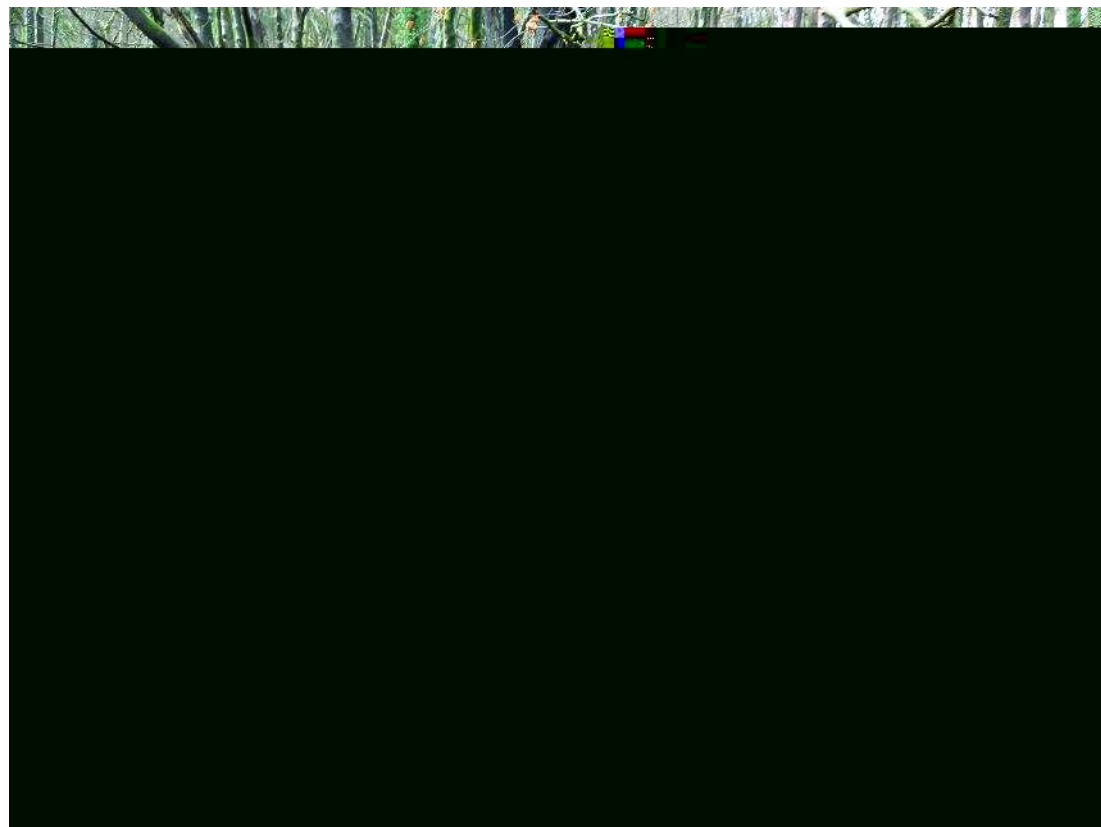
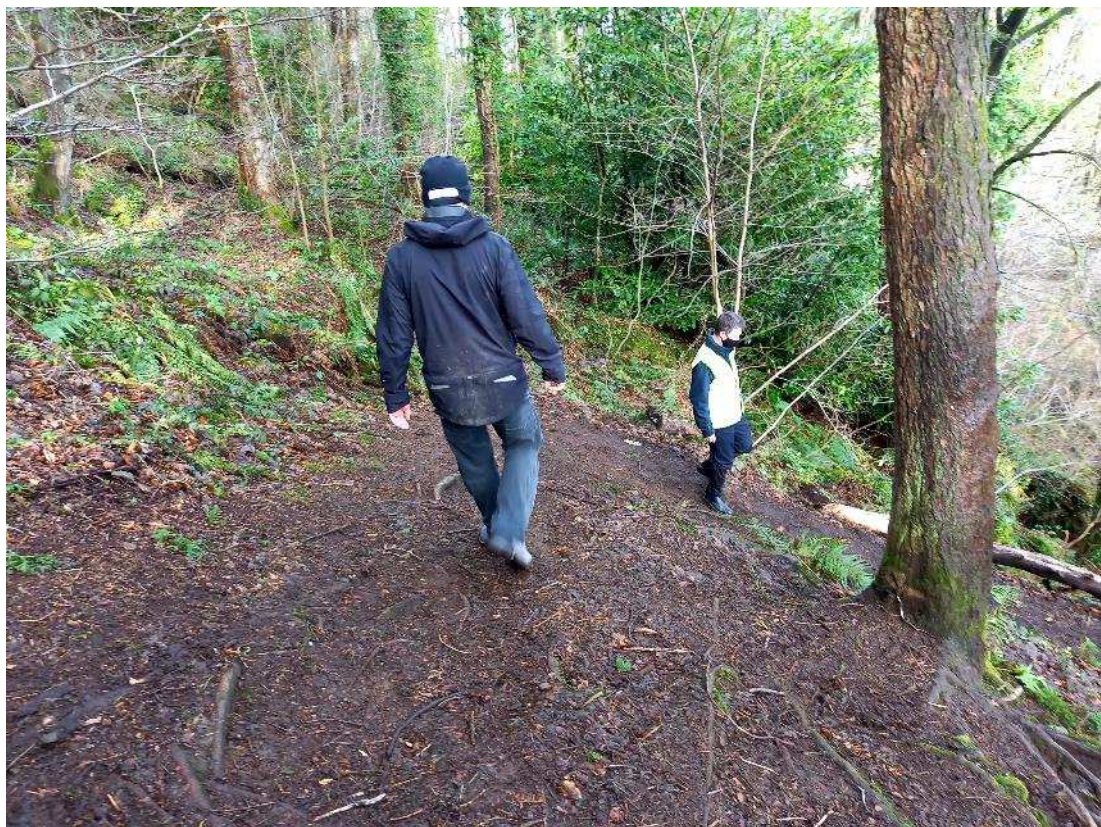


**OUTDOOR  
RECREATION**  
NORTHERN IRELAND

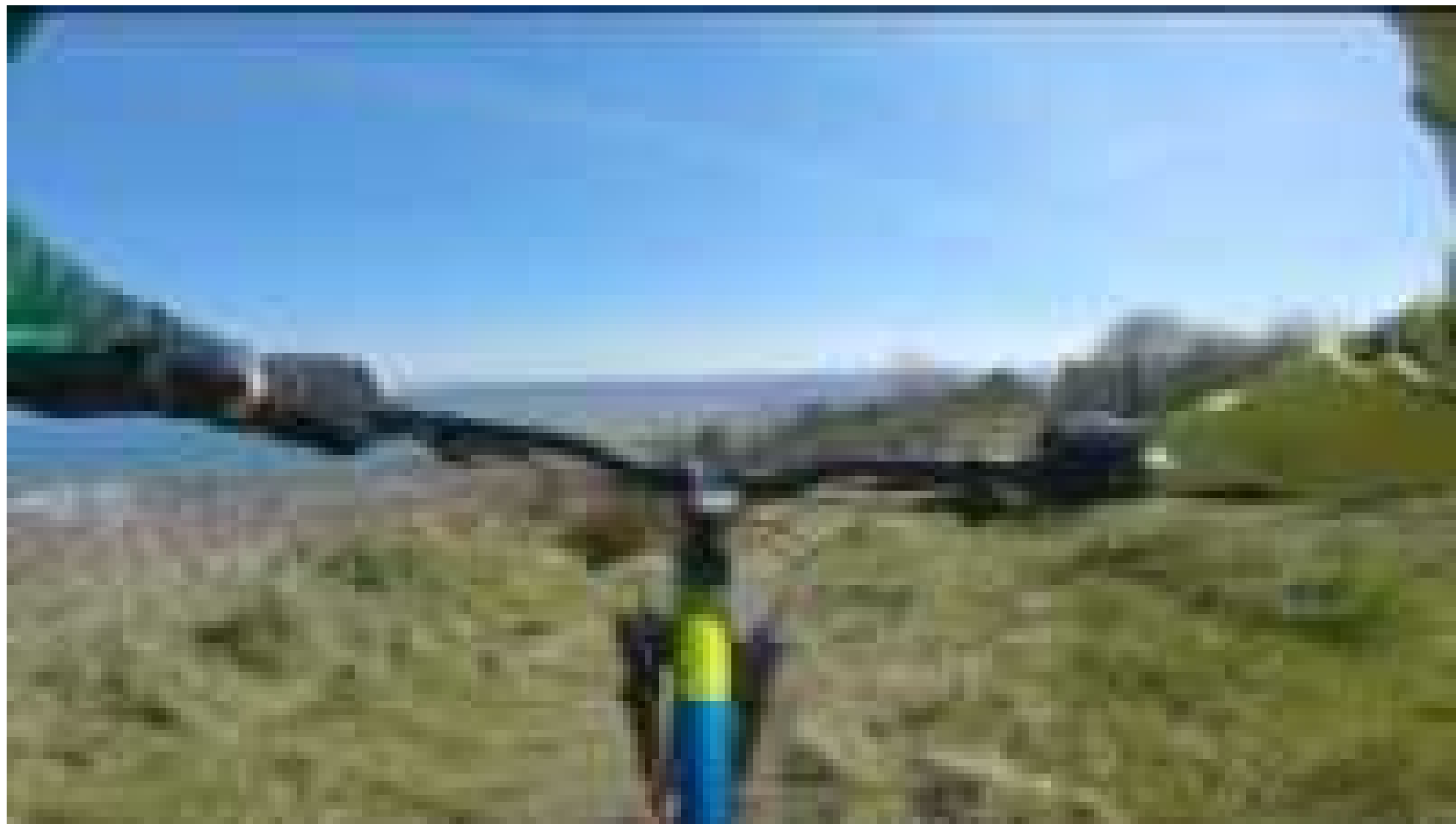


**OUTDOOR  
RECREATION**  
NORTHERN IRELAND









# Brief

## Desk

Existing  
Studies and  
Data

Best  
Practice

## Establishing Foundation

Consultation

Evaluation  
Framework

MOU

## Evaluation Framework

Online  
Survey

Data



# Brief

## Visitor Information Strategy

Audit

Action Plan

## The Middle

Risk Assess

Trail  
Management  
Guidance

# Case Study – Tweed Valley









# OUTDOOR RECREATION NORTHERN IRELAND

## Cave Hill Mountain Bike Trails

Scale: 1:8,000

### Key

#### Trails

##### MTB Trails

- Middle
- Forest Path Shortcut
- Quarry
- Devil's Punchbowl
- Gaga
- Hungry Heart
- Swayze Train
- Forest Path
- Mad Again
- Middle Trail Hiking Shortcut
- Lights Out
- Quarry Hike Trail
- Rush

##### Cave Hill Country Park Trails

- Castle Trail
- Cavehill Trail
- Estate Trail

#### Heritage Designations

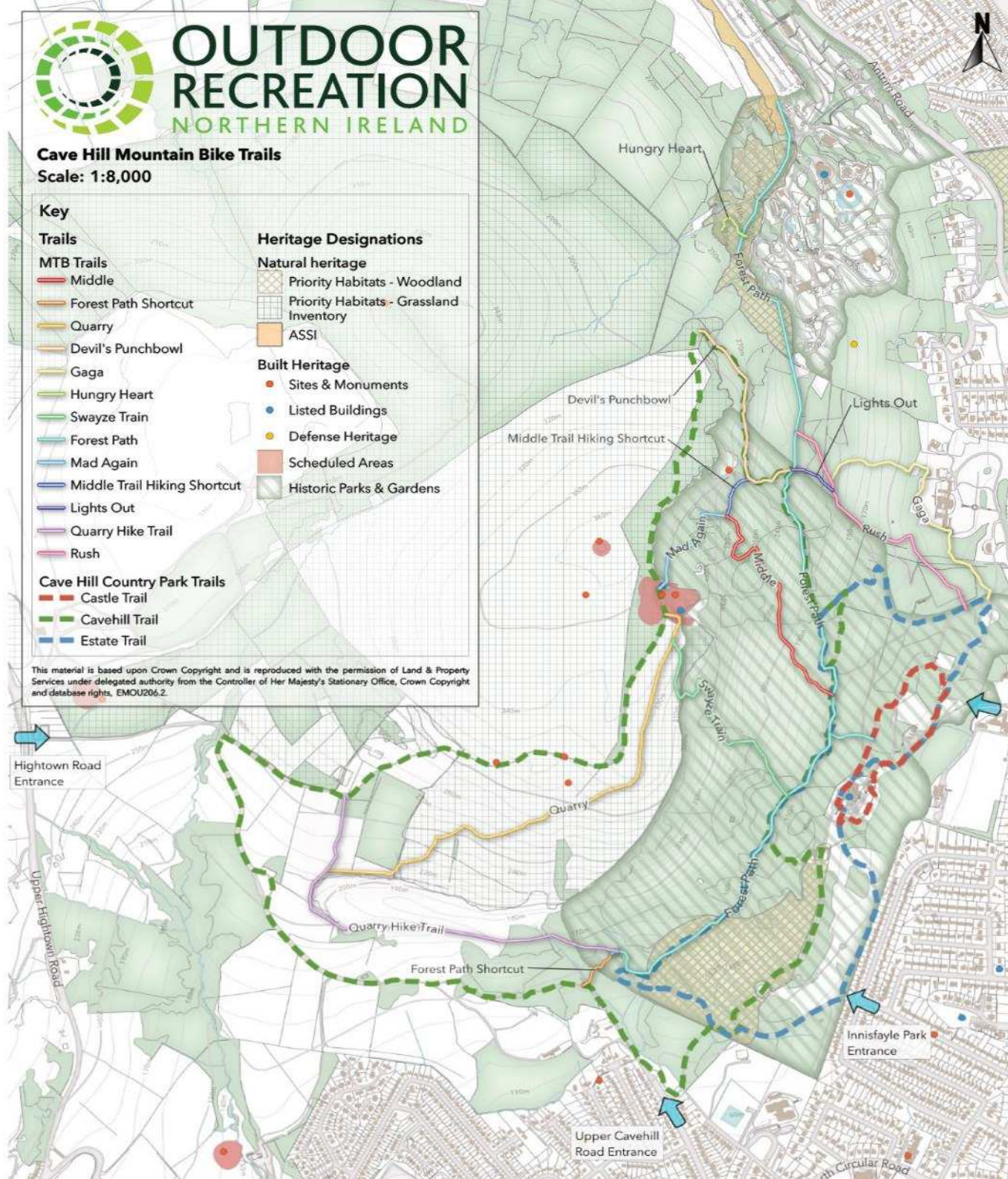
##### Natural heritage

- Priority Habitats - Woodland
- Priority Habitats - Grassland Inventory
- ASSI

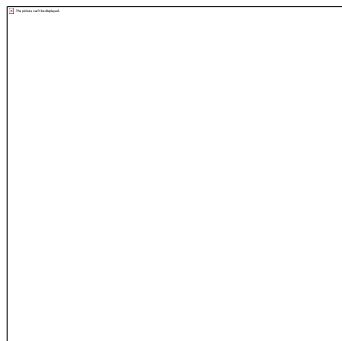
##### Built Heritage

- Sites & Monuments
- Listed Buildings
- Defense Heritage
- Scheduled Areas
- Historic Parks & Gardens

This material is based upon Crown Copyright and is reproduced with the permission of Land & Property Services under delegated authority from the Controller of Her Majesty's Stationary Office, Crown Copyright and database rights, EMOU206.2.

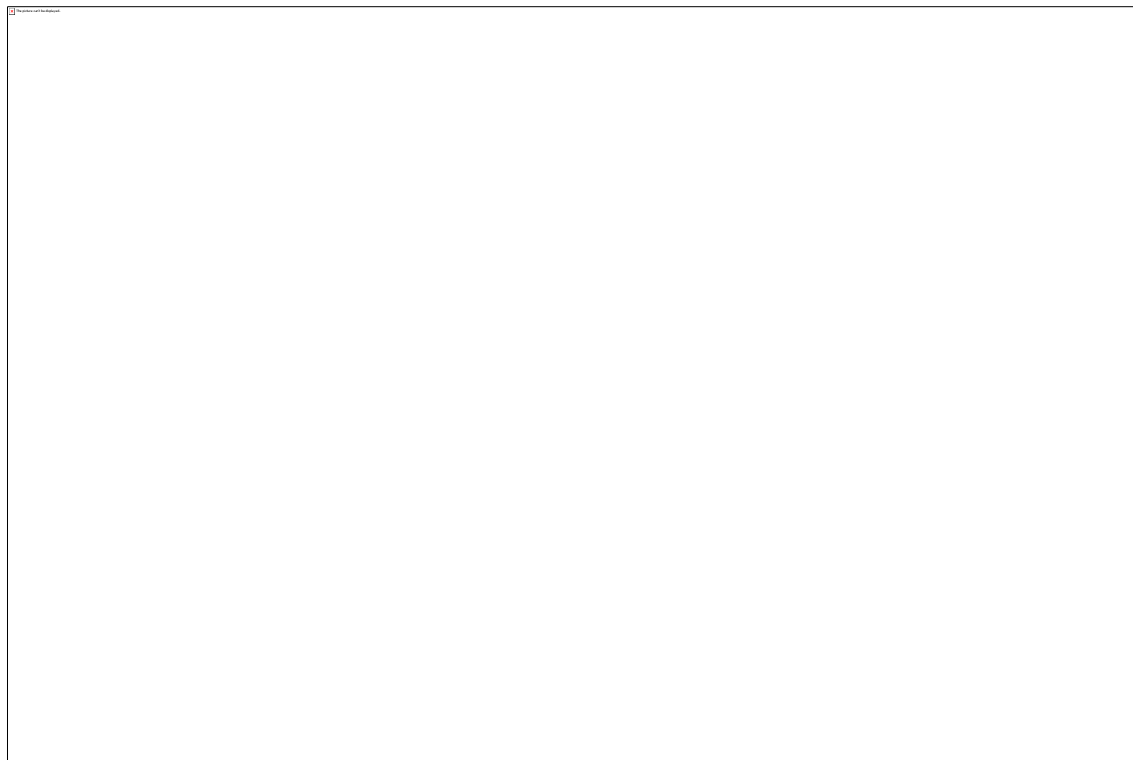


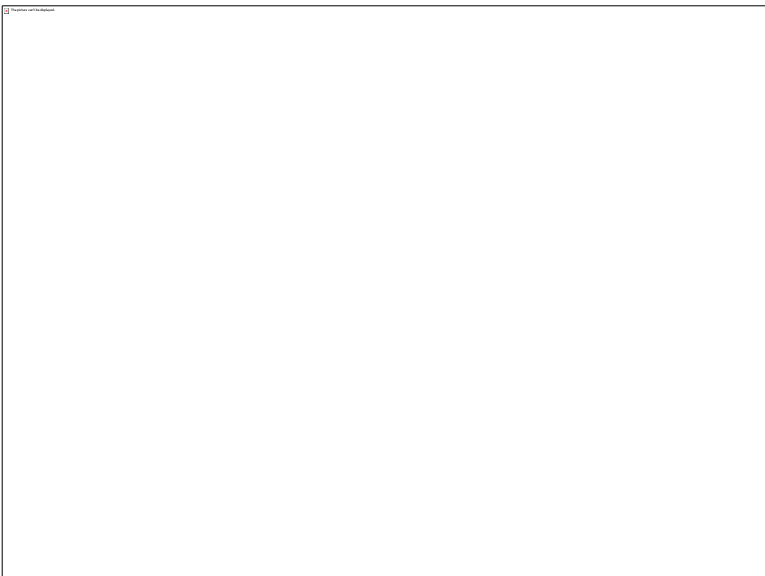
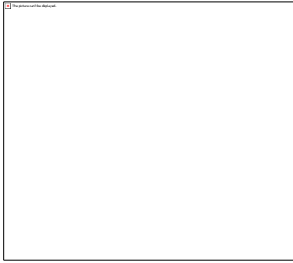




# Key Roles

- Management
- Inspection
- Maintenance
- Insurance
- Volunteer (Club Member) Management
- Advocacy / Engagement





- **Pre dig inspections by Cycling UK qualified volunteers** defining worksites and daily goals to provide clear guidance to on the day leader
- **Field note system** (pre and post dig) in place to **permanently record all work done** on trails and communicate work brief to volunteers during the session
- **Online risk assessments** created to allow standardised process for leaders to perform on the day risk assessments for each dig
- **Method of work statements** defining working practices and equipment usage
- **Checklist and on / off the hill procedures**
- Volunteers **Cycling UK** trained in volunteer management and first aid qualified.





## Tweed Valley Trails Association

3 January · 🌐

...

Shout out to the Innerleithen kids! (And parents...!)

We've noticed a few "micro trails" appearing in the Pirn Woods area over the festive season (between Leithen Water and Pirn Fort).

Awesome to see little rippers keen to get into trail building, but because they cut across multiple paths and T-bone them as well, and the huge amount of walkers, dogs, young families and horses on these multi use paths, Pirn Woods just isn't a good location for new bike trails.

We've been looking at ways to work with local kids clubs, DMBinS and FLS to deliver specific dig days for under 18s this year, so hopefully we can put your enthusiasm to good use soon, but it would be great if we can all keep Pirn Woods as a safe and friendly forest area for all users.

[Forestry and Land Scotland DMBinS Innerleithen Cycle Club](#)



**OUTDOOR  
RECREATION**  
NORTHERN IRELAND

# Next Steps



- MOU Sign Off
  - Trail Management Approach
  - Evaluation Framework
- 
- Monitor / Evaluate

# Discussion



Chris Scott

02890 303930

[chris@outdoorrecreationni.com](mailto:chris@outdoorrecreationni.com)